



Self Dumping Hopper

Designed to Dewater

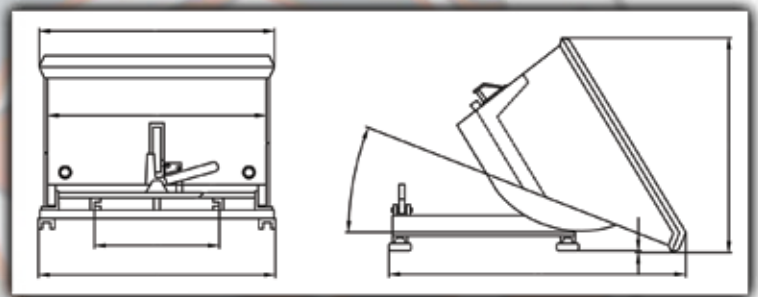
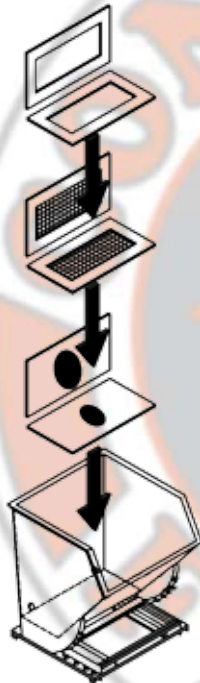
The Self Dumping Hopper is designed to dewater various types of wastes. The design of this container filter includes three components: the container, porous support plates, and filter media. The space between the support plates, the container walls, and the floor is the drainage fields for the liquid. Outlets on the bottom of the rear wall of the container allow for gravity drainage or pump suction of liquid from the Self Dumping Hopper. Once the waste has had ample time to dewater, it will be ready for disposal.



The Self Dumping Hoppers are constructed out of 10-gauge carbon steel. Units are then sandblasted with a commercial blast, coated with a two-part epoxy primer, and painted with a two-part epoxy top coat. Self Dumping Hoppers are available in 1/2, 1, 1-1/2, 2, 3, 4, and 5 cubic yard units.

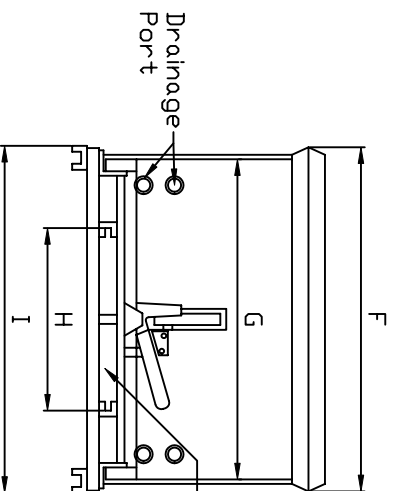
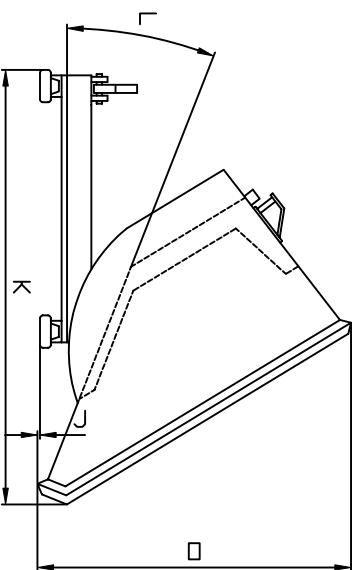
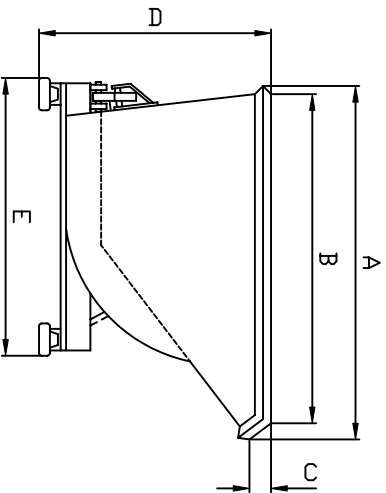


The Self Dumping Hopper can be assembled with different internal and external options to suit your needs. Internal options include designs for disposable liner use, front lip screens, center panel filters, or gravity/vacuum drainage. Externally, units can be constructed with a hinged, bolted down, or open roof design; and can be either skid mounted, trailer mounted, or set on casters. Standard hoppers are meant to be dumped by a common forklift, but the unit can be optioned to be dumped by a crane.



Flo Trend Systems Tel - 713-699-0152
707 Lehman St. 800-762-9893
Houston, TX 77018 Fax - 713-699-8054
sales@fлотrend.com

Model	Volume Capacity Cubicyds	A Inches	B Inches	C Inches	D Inches	E Inches	F Inches	G Inches	H Inches	I Inches	J Inches	K Inches	L Degrees	□ Inches	Weight Capacity Pounds	Shipping Weight Pounds
T-0-5	1/2	47	44	2 1/2	31	42 1/2	39	36	30 1/4	39	7	60	42	46	4,000	621
T-1-0	1	62	58	4	38 1/2	48	39	36	30 1/4	39	9	75	35	58	6,000	761
T-1-5	1 1/2	67	59 3/4	8	46 1/4	54 1/2	44 1/2	41	35 1/2	43 3/4	6	85	35	63	6,000	927
T-2-0	2	66	59 1/2	8	48	56 1/2	57	54	32	58	5	87	32	65	6,000	1,132
T-3-0	3	72 1/2	63	11 1/2	58 1/2	59	63	60	32	54 1/2	1/2	98	25	60	5,000	1,491
T-4-0	4	72 1/2	63	11 1/2	58 1/2	59	83	80	32	54 1/2	1/2	98	25	60	4,000	1,737
T-5-0	5	72 1/2	63	11 1/2	58 1/2	59	103	100	32	54 1/2	1/2	98	25	60	4,000	1,936

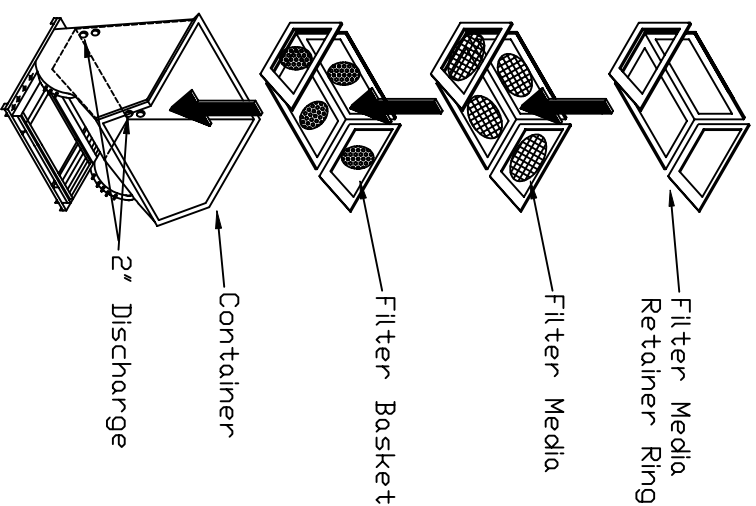


Fork Opening 2 3/4" High,
Forks Should Be As
Wide As "H",

Enter Forks Here

CONSTRUCTION FEATURES:

- * Structural Steel Base.
- * Precision Welded.
- * Expert Finish.
- * Spring Loaded Latch.
- * Press Fitted Rocker Pins.



Self Dumping Container Filter (Gravity / Vacuum Style)



SDF-VG
7-8-99

THESE DRAWINGS CONTAIN CONFIDENTIAL, PROPRIETARY INFORMATION. THEY ARE NOT TO BE COPIED, REPRODUCED OR USED IN ANY MANNER THAT WOULD COMPROMISE THE CONFIDENTIALITY OF THE INFORMATION CONTAINED HEREIN. THESE DRAWINGS ARE NOT TO BE USED FOR CONSTRUCTION, FABRICATION OR SPECIFICATION WITHOUT WRITING PERMISSION FROM FLO TREND SYSTEMS, INC. ANY REPRODUCTION OR TRANSMISSION OF THESE DRAWINGS WITHOUT THE WRITING PERMISSION OF FLO TREND SYSTEMS, INC. IS STRICTLY PROHIBITED. THE COMPANY OF THIS NOTICE WILL RESULT IN PROSECUTION AS ALLOWED UNDER THE LAWS OF THE STATE OF TEXAS, U.S.A. OR THOSE OF ANY OTHER APPROPRIATE JURISDICTION AS FLO TREND SYSTEMS, INC.