



Roll-Off Container Filter

Designed to Dewater

The Roll-Off Container Filter is engineered to dewater various types of wastes. The design of the Container Filter includes three components: the container, porous support plates, and a filter media. The space between the support plates, the container walls, and the floor, is the drainage field for the liquid. Outlets on the bottom and side walls allow for gravity drainage or pump suction of liquid from the Container Filter. Once the waste has had ample time to dewater, it will be ready for disposal.



Roll-Off units have a round bottom with 3" drainage ports, gasketed watertight doors, 1/4" floor, and 3/16" side walls. These units are sandblasted with a commercial-blast, coated with a two-part epoxy primer, and painted with a two-part epoxy top coat. Each unit can be equipped with a closed roof, a tarp, or an open top. As an option, a center panel can be added to increase the drainage surface area. Roll-Off Container Filters are available in 20, 25, 30, and 40 cubic yard capacities.

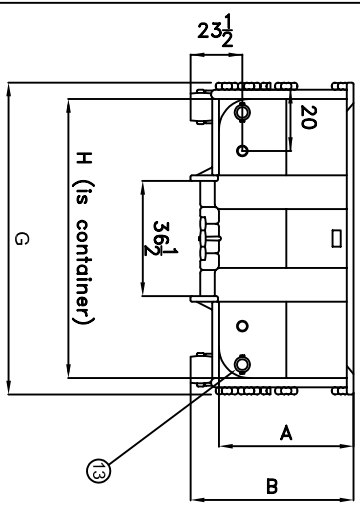
- Screened Materials
- Storm & Basin Waste
- Various Waste Streams
- Primary & Secondary Grit
- Lagoons
- Aeration Basins
- Sumps
- Wash Station Waste

U.S. Patent Nos. 4,871,454 and 5,595,654

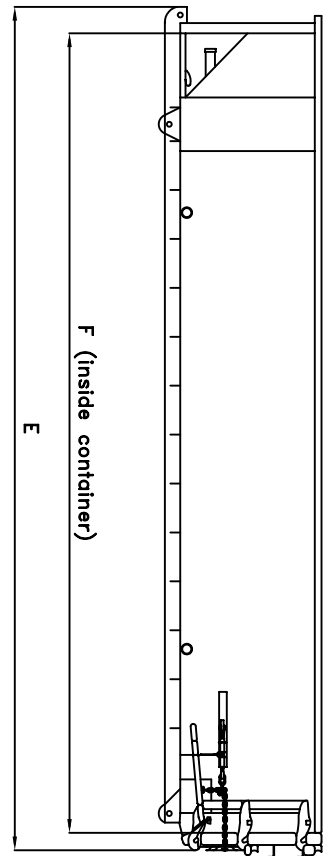
Flo Trend Systems Tel - 713-699-0152
707 Lehman St. 800-762-9893
Houston, TX 77018 Fax - 713-699-8054
sales@flotrend.com

MODEL #	VOLUME	A	B	C	D	E	F	G	H	WEIGHT <small>(APPROX)</small>	DRAINS
RB-20-XX	20 YD ³	41"	53"	28 1/2"	38"	277 1/2"	260"	102"	83 3/4"	7390 LB	6
RB-25-XX	25 YD ³	53"	65"	36 1/2"	46"	277 1/2"	260"	102"	83 3/4"	8615 LB	6
RB-30-XX	30 YD ³	65"	74"	40 1/2"	50"	277 1/2"	260"	102"	83 3/4"	9500 LB	6
RB-40-XX	40 YD ³	81"	93"	65 1/2"	75"	277 1/2"	260"	102"	83 3/4"	11870 LB	6

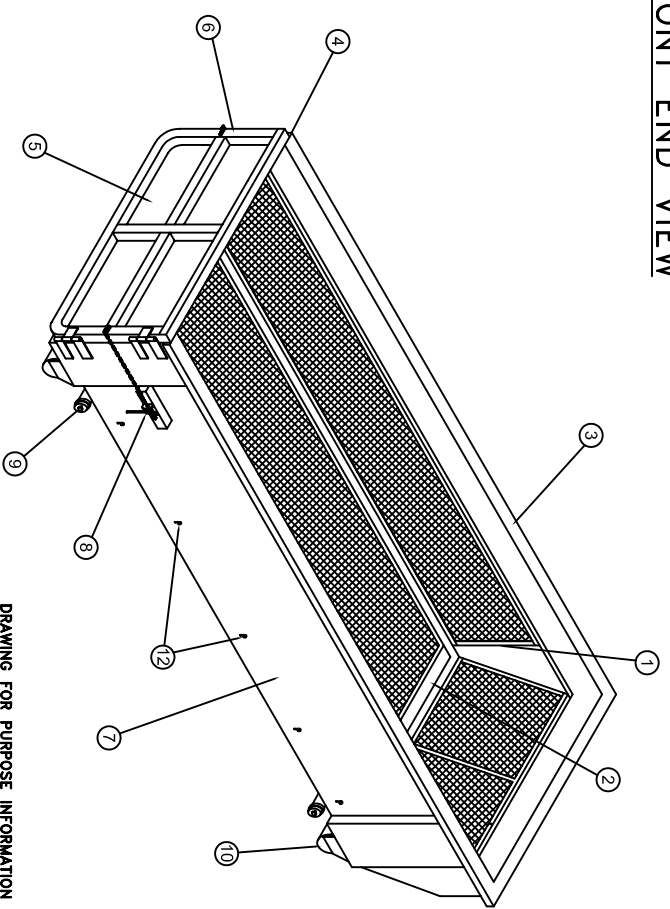
ITEM	DESCRIPTION
1	3/16 WALL PLATE
2	1/4 FLOOR PLATE
3	TOP RAIL 4 X 3 X 3/16 TUBING
4	SBR NEOPRENE 50/50 BLEND GASKET
5	3/16-A36 DOOR PLATE
6	3 X 3 X 3/16 DOOR TUBING
7	A36 CARBON STEEL SIDE & FRONT PLATES
8	3 RACHET BINDERS
9	3" DRAINS w/CAMS & CAPS (6)
10	8" DIA., 8" WIDE WHEELS
11	4" DIA., 6" WIDE TRACKING WHEELS
12	TARP HOOKS
13	6" CLEANOUT PORTS (2)



FRONT END VIEW



SIDE VIEW

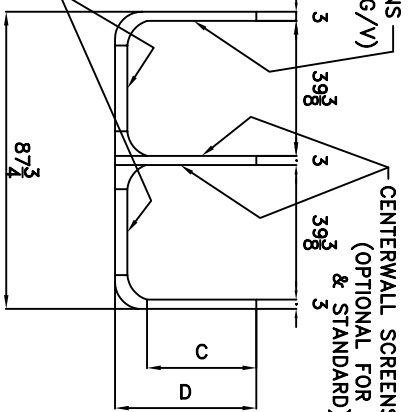


WALL SCREENS
(STANDARD & G/V)

CENTERWALL SCREENS
(OPTIONAL FOR G/V & STANDARD)

FLOOR SCREENS
(STANDARD, G/V & BASIC)

TYP CROSS SEC



THESE DRAWINGS CONTAIN CONFIDENTIAL, PROPRIETARY INFORMATION. THEY ARE NOT TO BE COPIED, REPRODUCED OR USED IN ANY MANNER THAT WOULD COMPROMISE THE CONFIDENTIALITY OF THE INFORMATION CONTAINED HEREIN. THESE DRAWINGS ARE NOT TO BE USED FOR CONSTRUCTION, FABRICATION OR SPECIFICATION WRITING PURPOSES UNLESS A SPECIFIC CONFIDENTIALITY AGREEMENT AND LICENSING AGREEMENT HAVE FIRST BEEN ENTERED INTO WITH FLO TREND SYSTEMS, INC. OF HOUSTON, TEXAS. FAILURE TO OBSERVE THE CONDITION OF THIS NOTICE WILL RESULT IN PROSECUTION AS ALLOWED UNDER THE LAWS OF THE STATE OF TEXAS, U.S.A. OR THOSE OF ANY OTHER APPROPRIATE JURISDICTION AS FLO TREND SYSTEMS, INC.

PATENT NO. 4,871,454 AND PATENT PENDING



707 LEMANN		HOUSTON, TEXAS 77018	
SCALE:		DRAWN BY: JM	
NONE		APPROVED BY:	
DATE: 08-14-01		DESCRIPTION: GENERAL ARRANGEMENT	
TITLE: FLO TREND SYSTEMS ROLL-OFF BOXES		DRAWING NUMBER: RB-DATA01	

DRAWING FOR PURPOSE INFORMATION ONLY (SUBJECT TO CHANGE WITHOUT NOTICE)