



Roll-Off Sludge Mate®

Designed to Dewater

The Sludge Mate® is used along with polymer to dewater various types of waste. The polymer is mixed with the waste, then the mixture is processed through the Sludge Mate®. The Sludge Mate® has filters that retain the solids and allow the water to pass through the filters and out the drainage ports. The clear liquid is not treated water and must be disposed of properly. Once the sludge has been dewatered for between 12 and 24 hours, it will pass the paint filter test and will be ready for disposal.

*Sample Application**

Beginning Waste % of Solids	Beginning Waste Volume	Processing Time	Dewatered Waste % of Solids	Dewatered Waste Volume	Volume Reduction
2 - 3%	10,000 Gallons	24 Hours	12 - 16%	8 - 10 Cu Yards	80 - 85%

**Note: Individual application results, as well as processing capacity depends on % of solids in the sludge*



Available in sizes ranging from 15 cu. yd. to 40 cu. yd. Units can be equipped with a closed roof with hatchways, a tarp, an open top, or a sliding lid. Roll-Off units are designed to be handled by a roll-off hoist truck. They are of rectangular design and have a filter panel on each wall and one in the center extending the length of the container.

Sludge Mate® Processing Capabilities	
Sludge Mate® Size	Amount of sludge processed per day
5 cu. yd.	5,000 gallons
7 cu. yd.	7,000 gallons
12 cu. yd.	12,000 gallons
15 cu. yd.	15,000 gallons
20 cu. yd.	20,000 gallons
25 cu. yd.	25,000 gallons
30 cu. yd.	30,000 gallons
40 cu. yd.	40,000 gallons

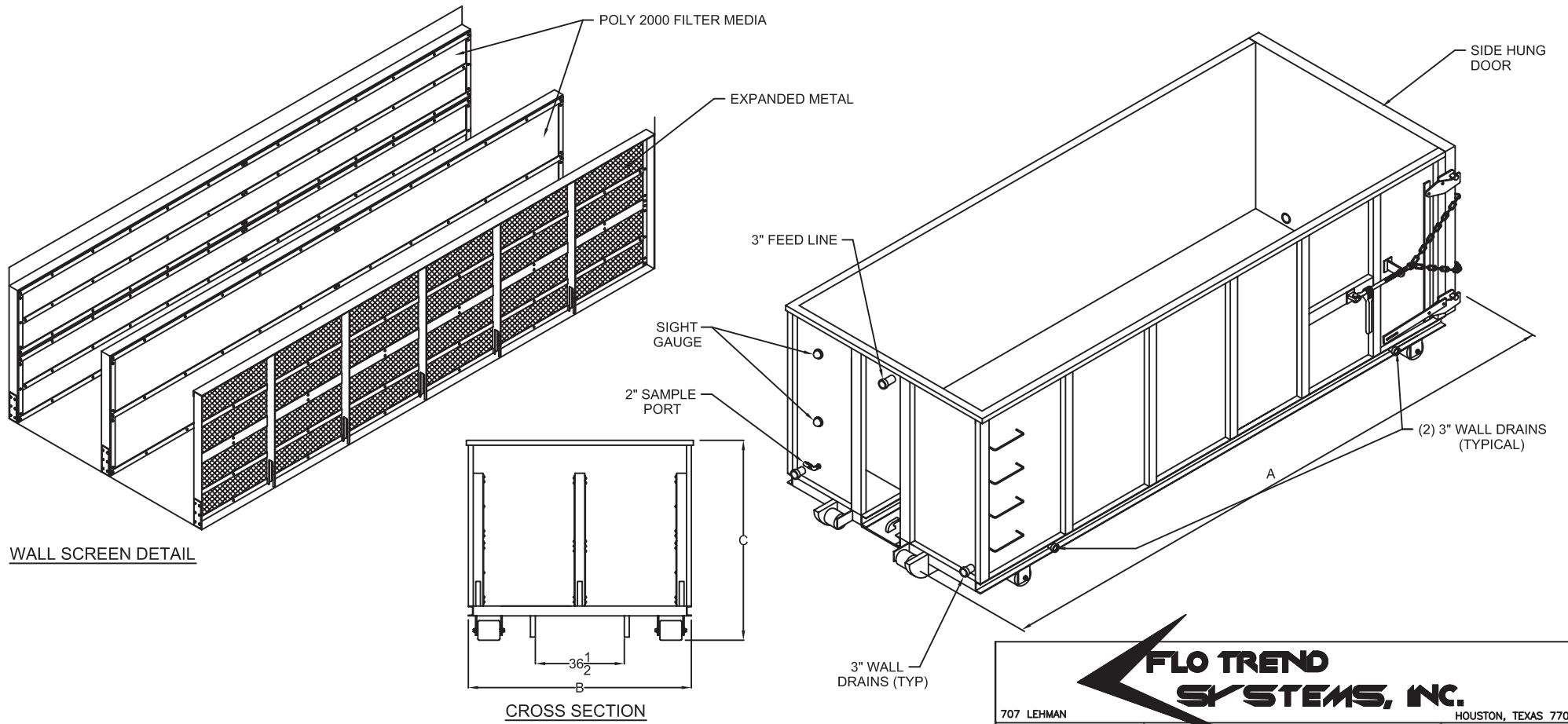
- Grease Trap Waste
- Septic Tank Waste
- Digested Sludge
- Alum Sludge



Flo Trend Systems Tel - 713-699-0152
 707 Lehman St. 800-762-9893
 Houston, TX 77018 Fax - 713-699-8054
 sales@fлотrend.com

MODEL	VOLUME	A	B	C	(APPRX)WEIGHT	WHEELS
SM-15	15 YD ³	12'-1"	8'-6"	5'-10 3/8"	6890 LB	9" WIDE
SM-20	20 YD ³	16'-1"	8'-6"	5'-10 3/8"	10340 LB	9" WIDE
SM-25	25 YD ³	20'-1"	8'-6"	5'-10 3/8"	11304 LB	9" WIDE
SM-30	30 YD ³	23'-1"	8'-6"	5'-10 3/8"	11680 LB	9" WIDE
SM-40	40 YD ³	23'-1"	8'-6"	7'-9 3/8"	12255 LB	9" WIDE

* NOTE:
4" CLEANOUTS (TYP)
LOWER DOOR




WALL SCREEN DETAIL

CROSS SECTION

THESE DRAWINGS CONTAIN CONFIDENTIAL PROPRIETARY INFORMATION. THEY ARE NOT TO BE COPIED, REPRODUCED OR USED IN ANY MANNER THAT WOULD COMPROMISE THE CONFIDENTIALITY OF THE INFORMATION CONTAINED HEREIN. THESE DRAWINGS ARE NOT TO BE USED FOR CONSTRUCTION, FABRICATION OR SPECIFICATION WRITING PURPOSES UNLESS A SPECIFIC CONFIDENTIALITY AGREEMENT AND LICENSING AGREEMENT HAVE FIRST BEEN ENTERED INTO WITH FLO TREND SYSTEMS, INC. OF HOUSTON, TEXAS. FAILURE TO OBSERVE THE CONDITION OF THIS NOTICE WILL RESULT IN PROSECUTION AS ALLOWED UNDER THE LAWS OF THE STATE OF TEXAS, U.S.A. OR THOSE OF ANY OTHER APPROPRIATE JURISDICTION AS FLO TREND SYSTEMS, INC.

DRAWINGS FOR PURPOSE INFORMATION ONLY



FLO TREND SYSTEMS, INC.

707 LEHMAN		HOUSTON, TEXAS 77018	
SCALE:	NONE	APPROVED BY:	JM
DATE:	02-15-05	DESCRIPTION:	PRESENTATION DRAWING
TITLE:	FLO TREND SYSTEMS SLUDGEMATES		DRAWING NUMBER:
			Sm-Spec-001